



Leslie Green Oxblood -1905



Cromwell Place - 1872



The Sherrin Arcade - 1907



Thurloe Street, North - 1845



Thurloe Street, South - 1846



Station Entrance - 1907



Pelham Place - 1835-1840



Thurloe Square, South -1842



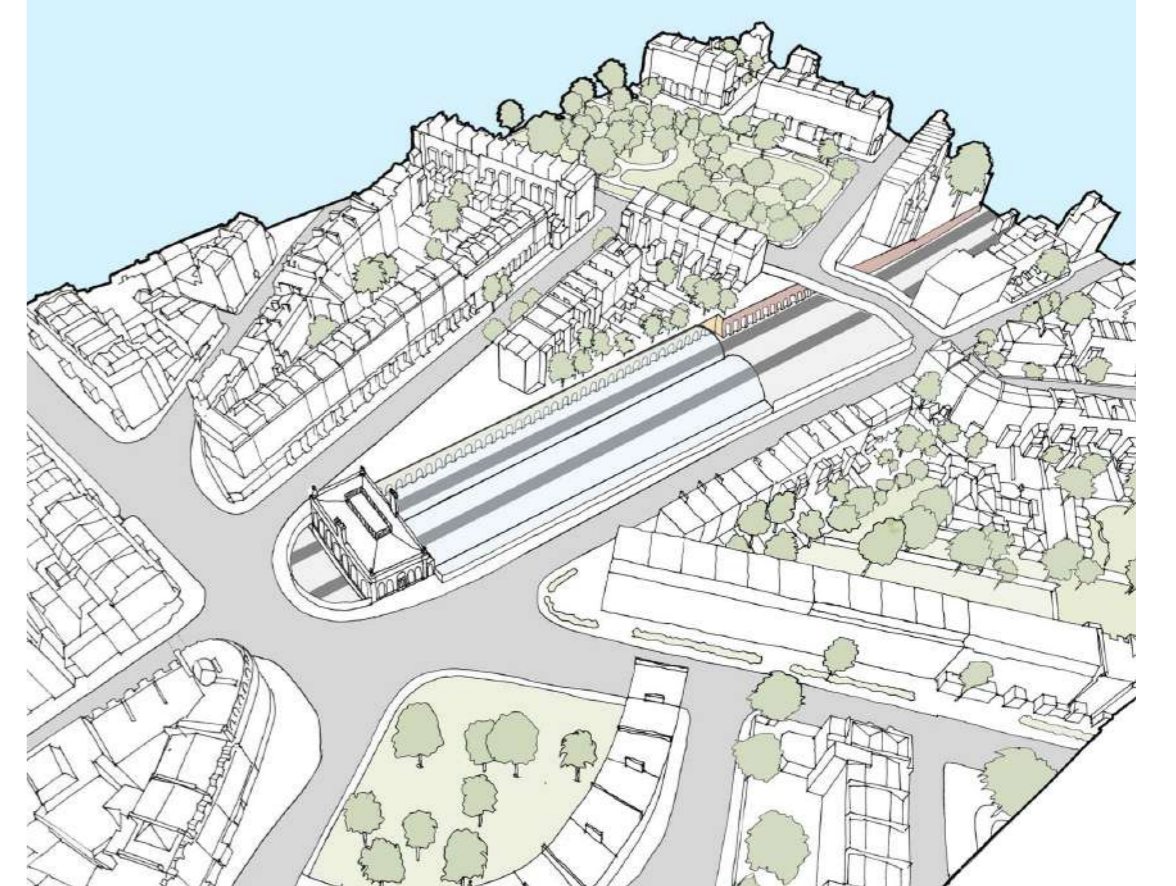
52 Thurloe Square - 1888



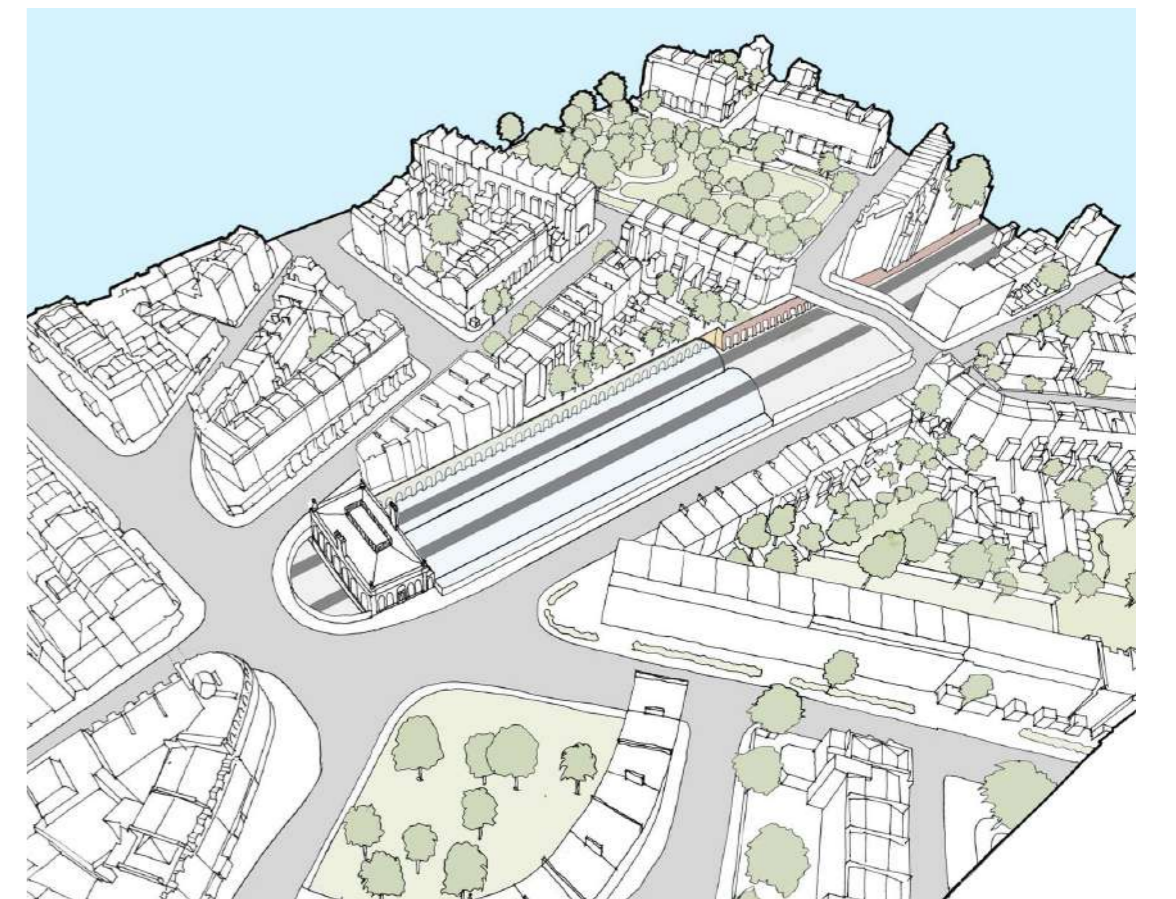
Thurloe Square, West - 1845



1845 Villas and terraced houses occupied the site prior to arrival of the station



1871 Pelham St terrace, Thurloe Sq and Pelham Pl set pieces destroyed by railway cutting



1888 Extension of Exhibition Road creating direct axial link to station



1907 Sherrin Arcade and Oxblood Building built



1914 Bullnose shops built and Pelham Street Terrace reconstructed



1970- Pelham Street Terrace demolished again in 1970s to allow for Piccadilly Line escalators



Existing Station



Proposed Massing

South Kensington Around Station Development



View of site and cultural quarter



South Kensington Station



View towards site from Exhibition Road



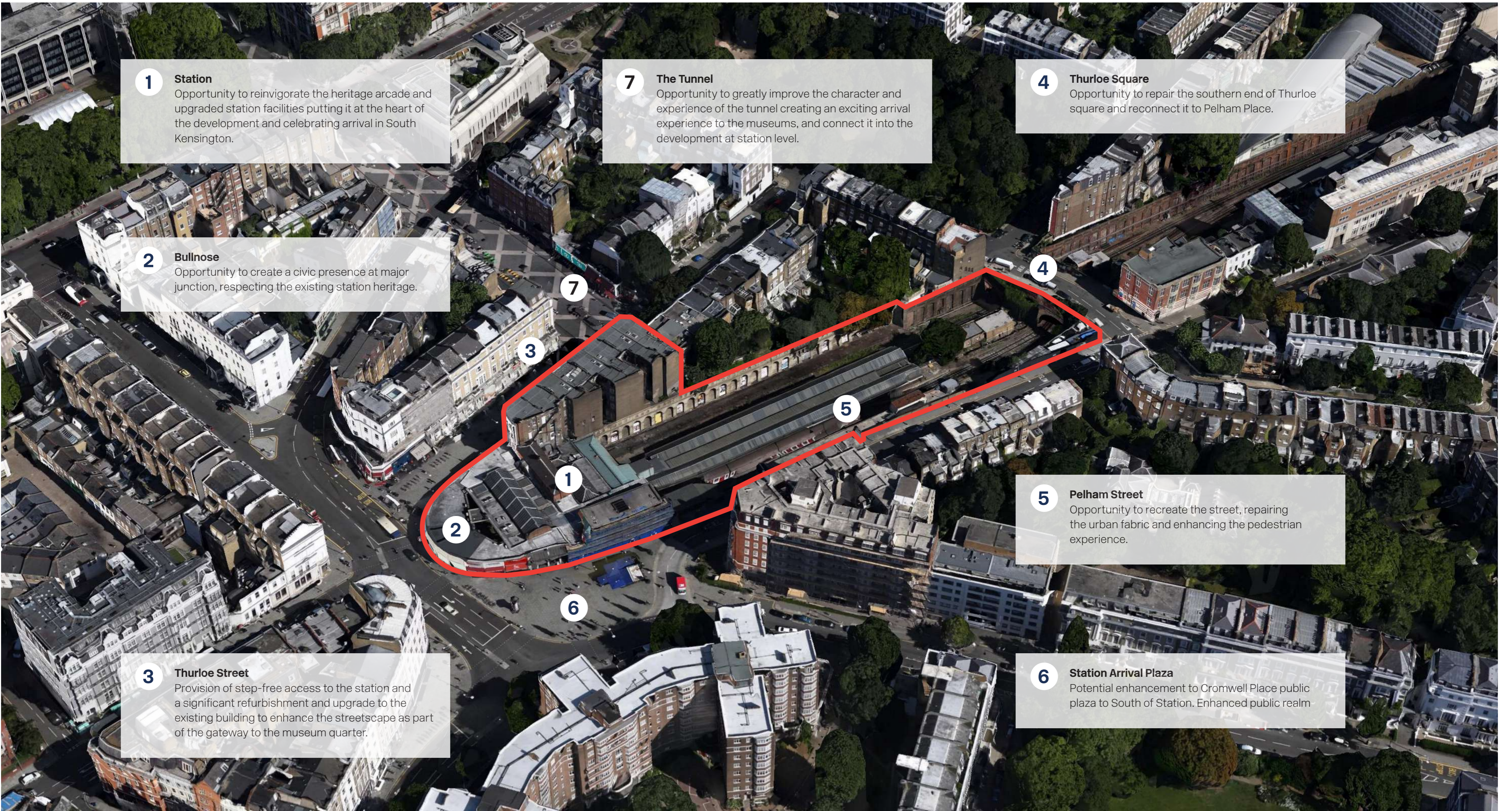
Pelham Place, constructed 1833-8



Thurloe Square, constructed 1839-44



Thurloe Street



1 Station
Opportunity to reinvigorate the heritage arcade and upgraded station facilities putting it at the heart of the development and celebrating arrival in South Kensington.

2 Bullnose
Opportunity to create a civic presence at major junction, respecting the existing station heritage.

3 Thurloe Street
Provision of step-free access to the station and a significant refurbishment and upgrade to the existing building to enhance the streetscape as part of the gateway to the museum quarter.

7 The Tunnel
Opportunity to greatly improve the character and experience of the tunnel creating an exciting arrival experience to the museums, and connect it into the development at station level.

4 Thurloe Square
Opportunity to repair the southern end of Thurloe square and reconnect it to Pelham Place.

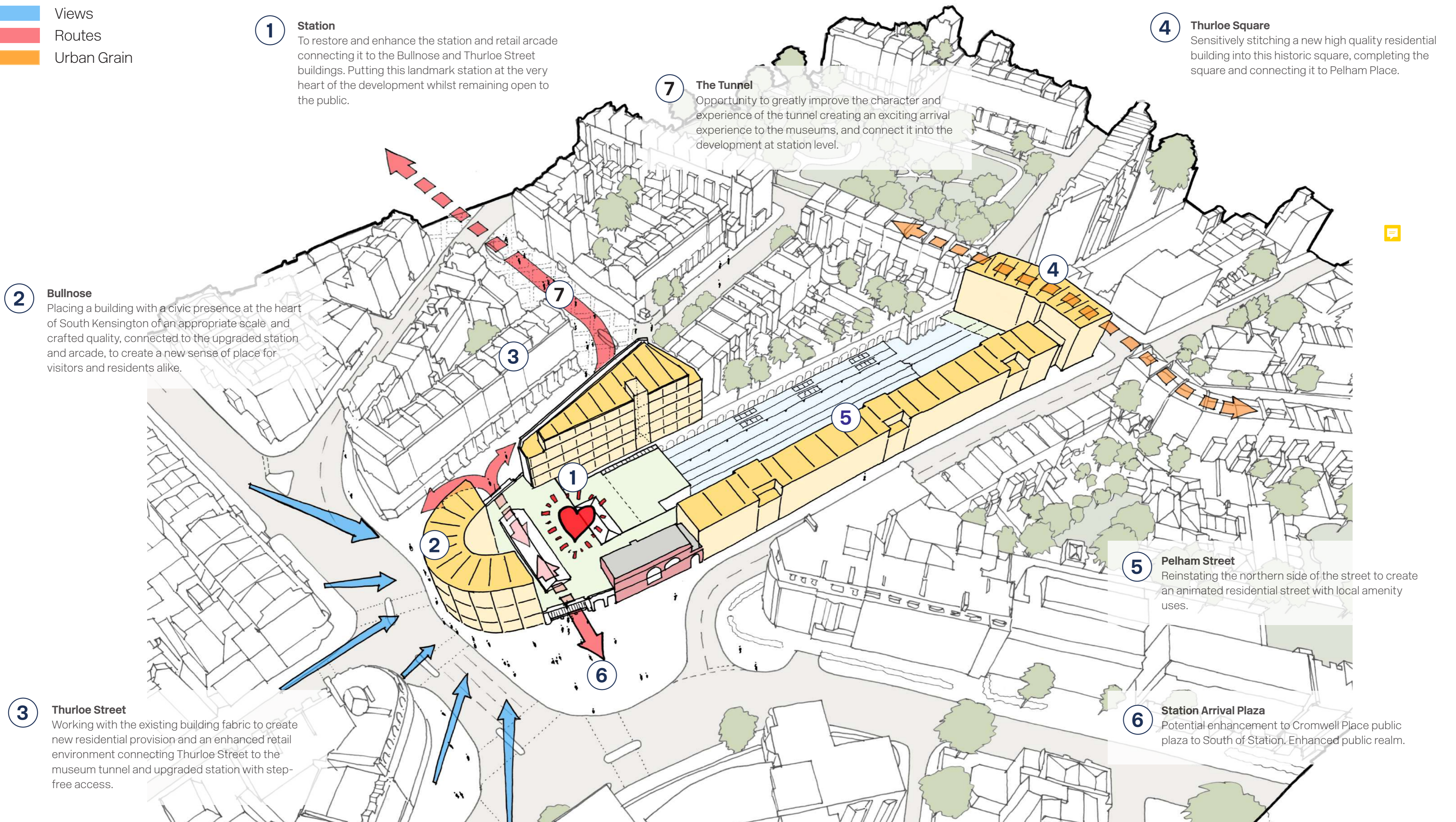
5 Pelham Street
Opportunity to recreate the street, repairing the urban fabric and enhancing the pedestrian experience.

6 Station Arrival Plaza
Potential enhancement to Cromwell Place public plaza to South of Station. Enhanced public realm

View looking north east of station in surrounding context

Key

- ▬ Views
- ▬ Routes
- ▬ Urban Grain



1 Station
To restore and enhance the station and retail arcade connecting it to the Bullnose and Thurloe Street buildings. Putting this landmark station at the very heart of the development whilst remaining open to the public.

7 The Tunnel
Opportunity to greatly improve the character and experience of the tunnel creating an exciting arrival experience to the museums, and connect it into the development at station level.

4 Thurloe Square
Sensitively stitching a new high quality residential building into this historic square, completing the square and connecting it to Pelham Place.

2 Bullnose
Placing a building with a civic presence at the heart of South Kensington of an appropriate scale, and crafted quality, connected to the upgraded station and arcade, to create a new sense of place for visitors and residents alike.

5 Pelham Street
Reinstating the northern side of the street to create an animated residential street with local amenity uses.

3 Thurloe Street
Working with the existing building fabric to create new residential provision and an enhanced retail environment connecting Thurloe Street to the museum tunnel and upgraded station with step-free access.

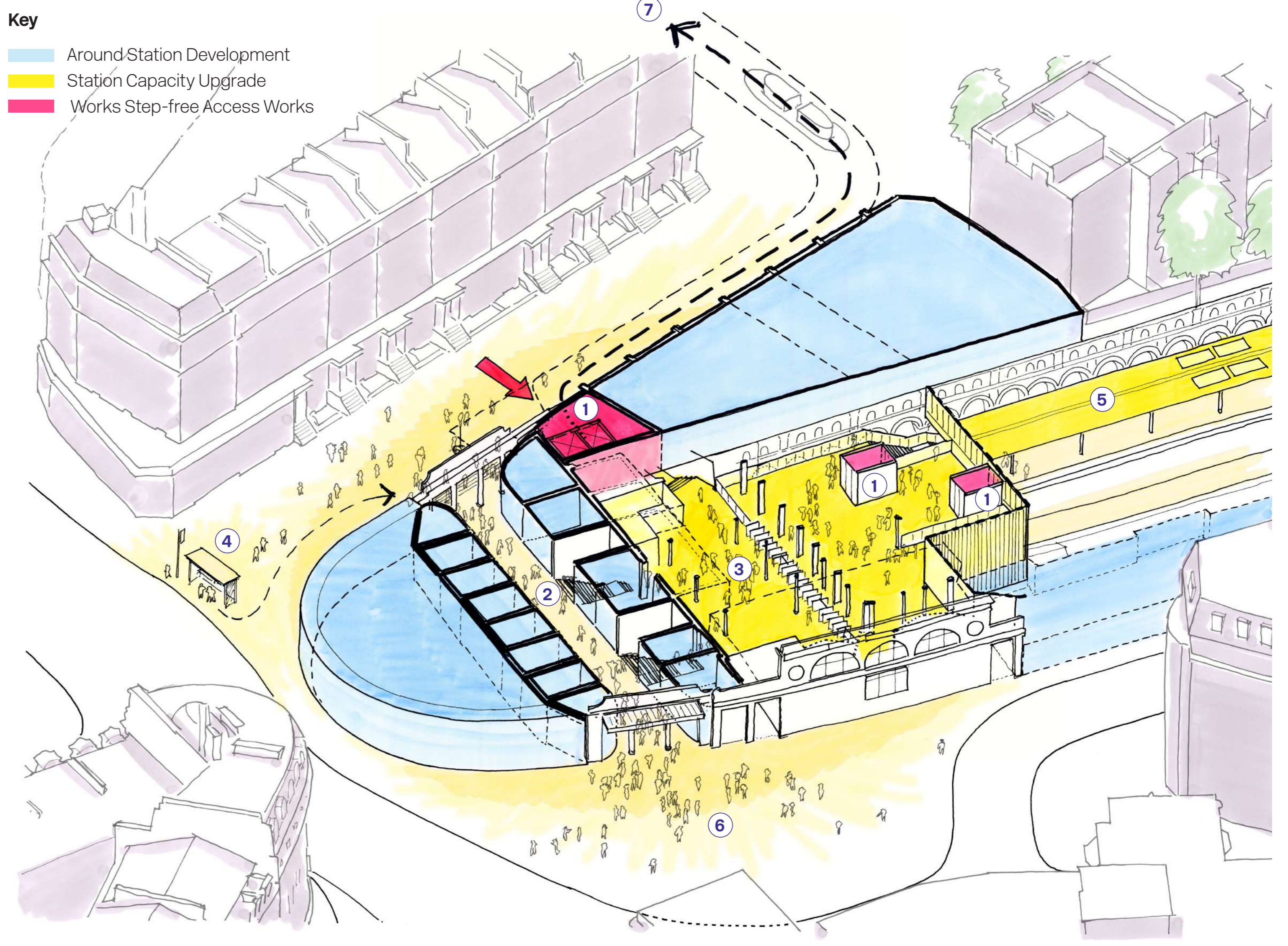
6 Station Arrival Plaza
Potential enhancement to Cromwell Place public plaza to South of Station. Enhanced public realm.

Proposed Massing



View from Old Brompton Road

- Step Free Access**
 As part of the Station Capacity Upgrade Works and subsequent Station Enhancement Works, step free access is to be provided from Thurloe Street to Platform level (via the Ticket Hall).
- Arcade**
 Create a range of new high quality retail with frontages addressing both Cromwell Place and the Station Arcade, respecting the existing heritage.
- The Ticket Hall**
 The Station Capacity Upgrade Works will refurbish and reinvigorate the existing ticket hall.
- Bus / Tube Interchange**
 Providing a positive experience to passengers using South Kensington as an interchange to/from the bus stops immediately adjacent to the station.
- Station Upgrades**
 Station Capacity Upgrade works, designed by Weston Williamson + Partners - granted planning and listed building consent in Jan 2018.
- Station Arrival Plaza**
 Potential enhancement to Cromwell Place public plaza to South of Station. Enhanced public realm.
- Museum Subway**
 Maintaining the link between the Station and the Museum Subway



Future works to South Kensington Station including step-free access



View from Cromwell Place along Thurloe Street



South Kensington Station Circa 1845



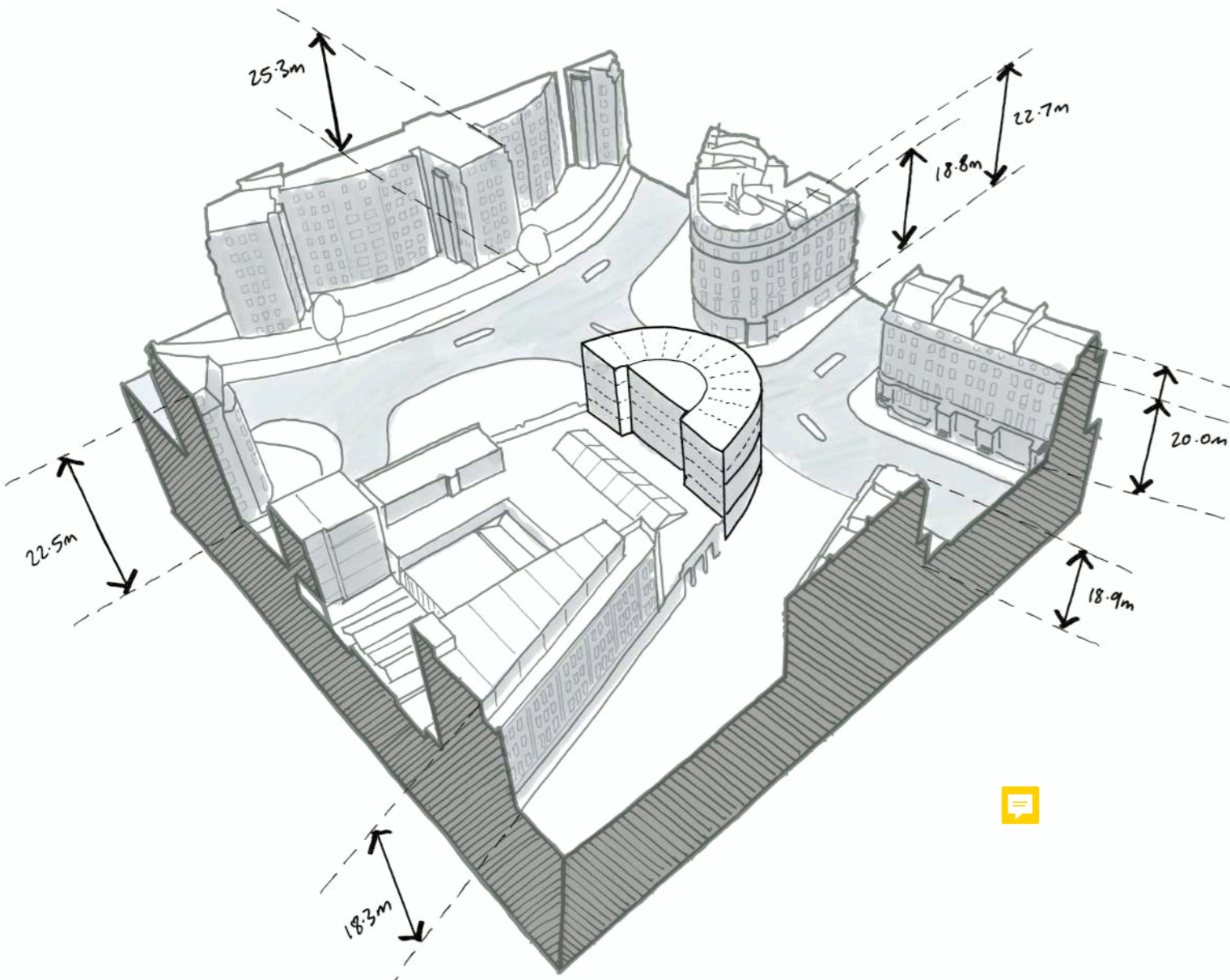
The George Sherrin-designed arcade under construction circa 1907



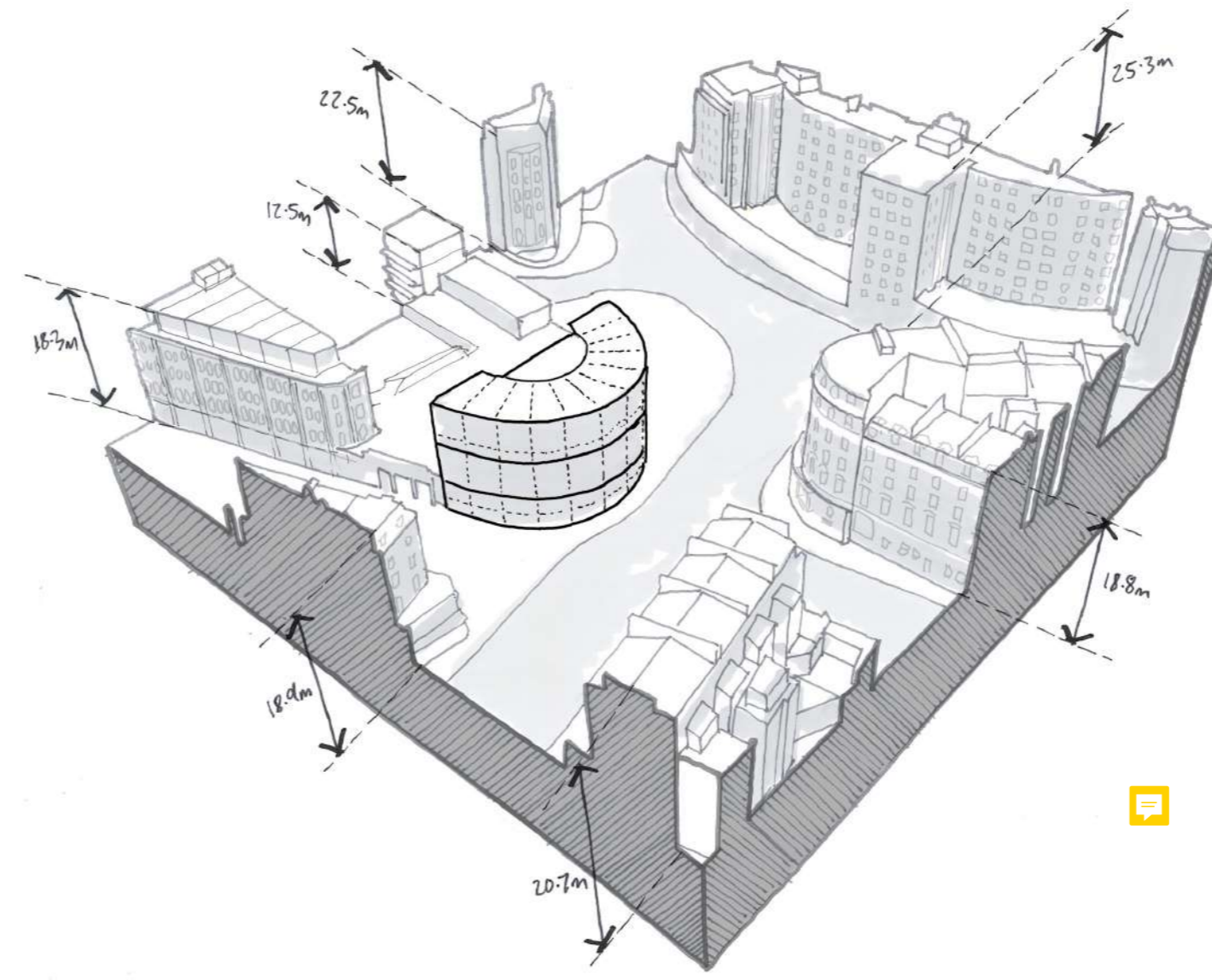
The George Sherrin-designed arcade under construction circa 1907



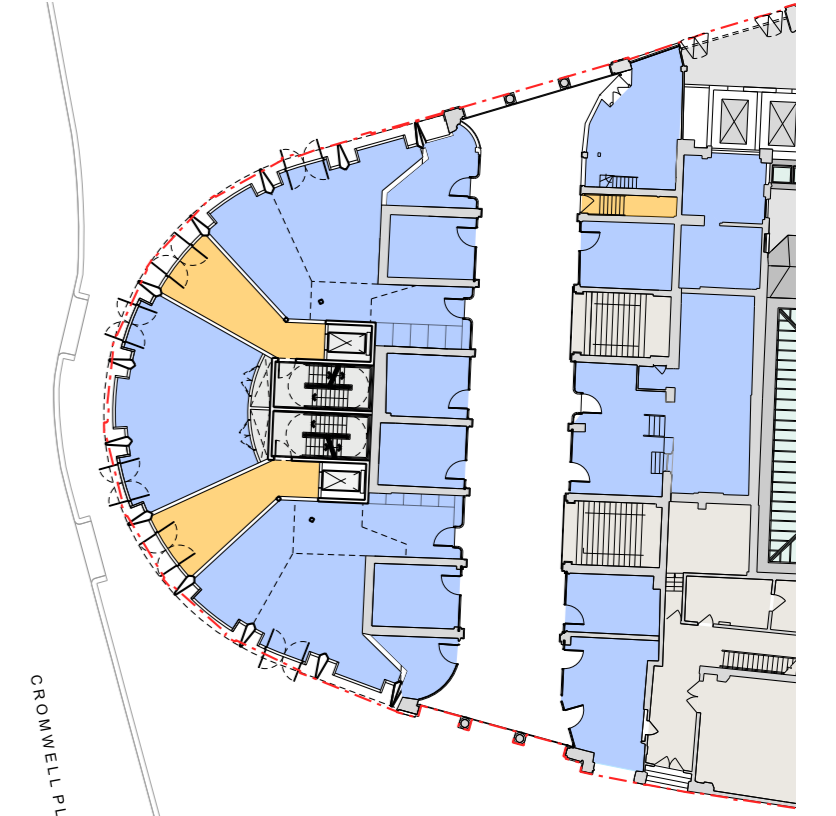
The Bullnose shops constructed 1907-1916



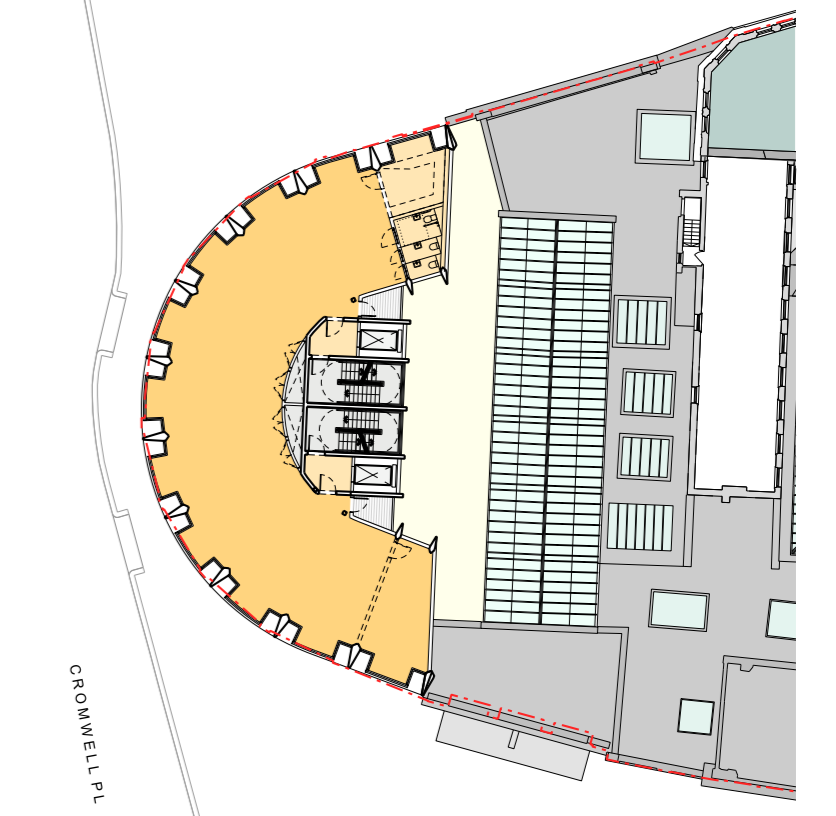
The Bullnose context height study with adjacent buildings - view from north east



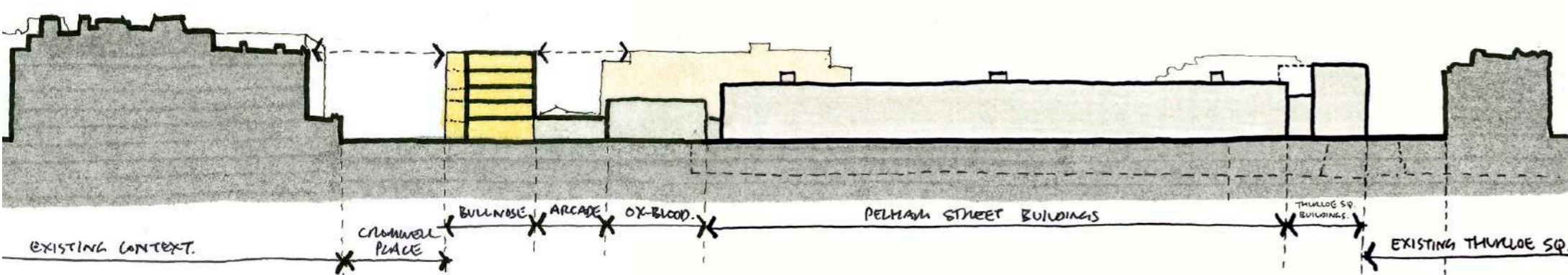
The Bullnose context height study with adjacent buildings - view from north west



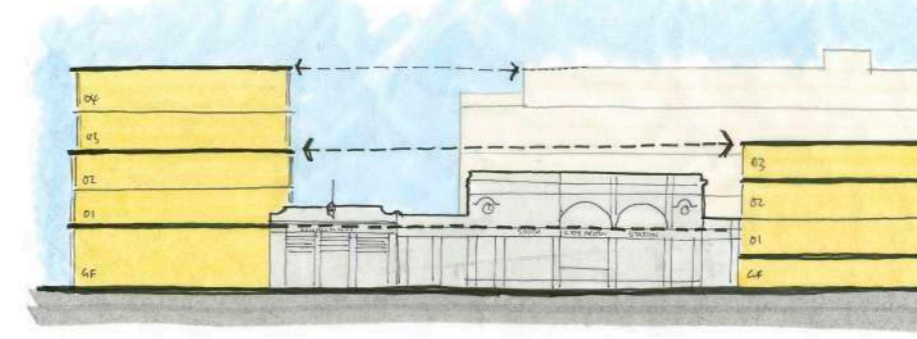
Ground Floor Plan



Typical Upper Level Plan



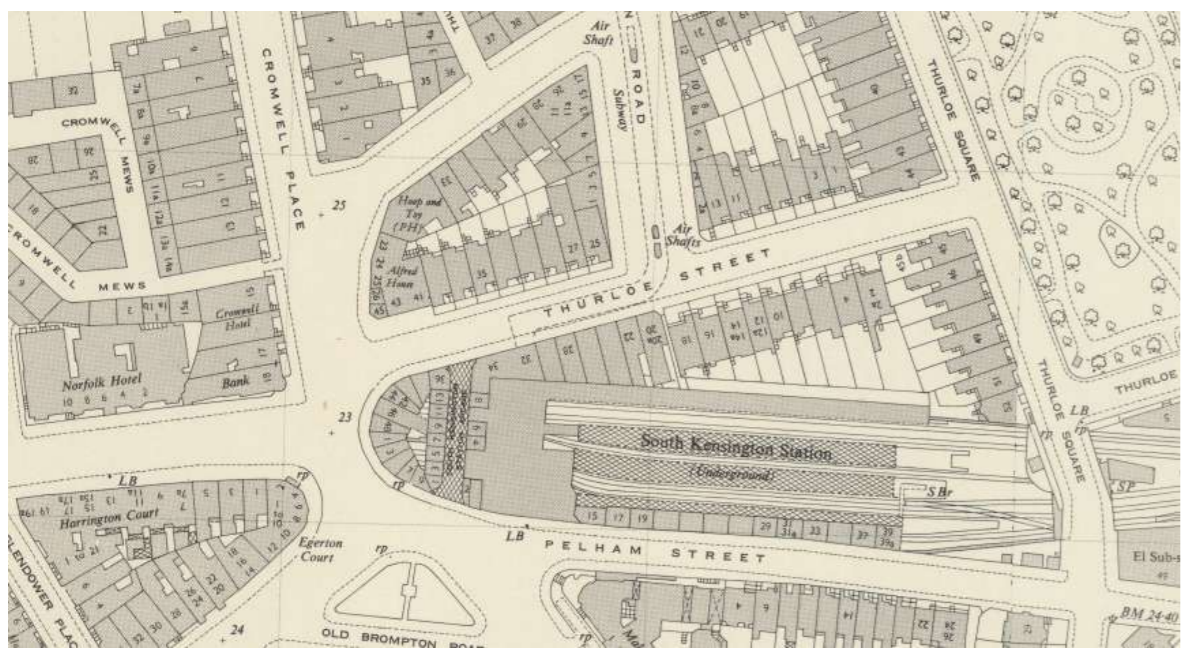
The Bullnose and Pelham Street sectional diagram



The Bullnose and Pelham Street datum alignments



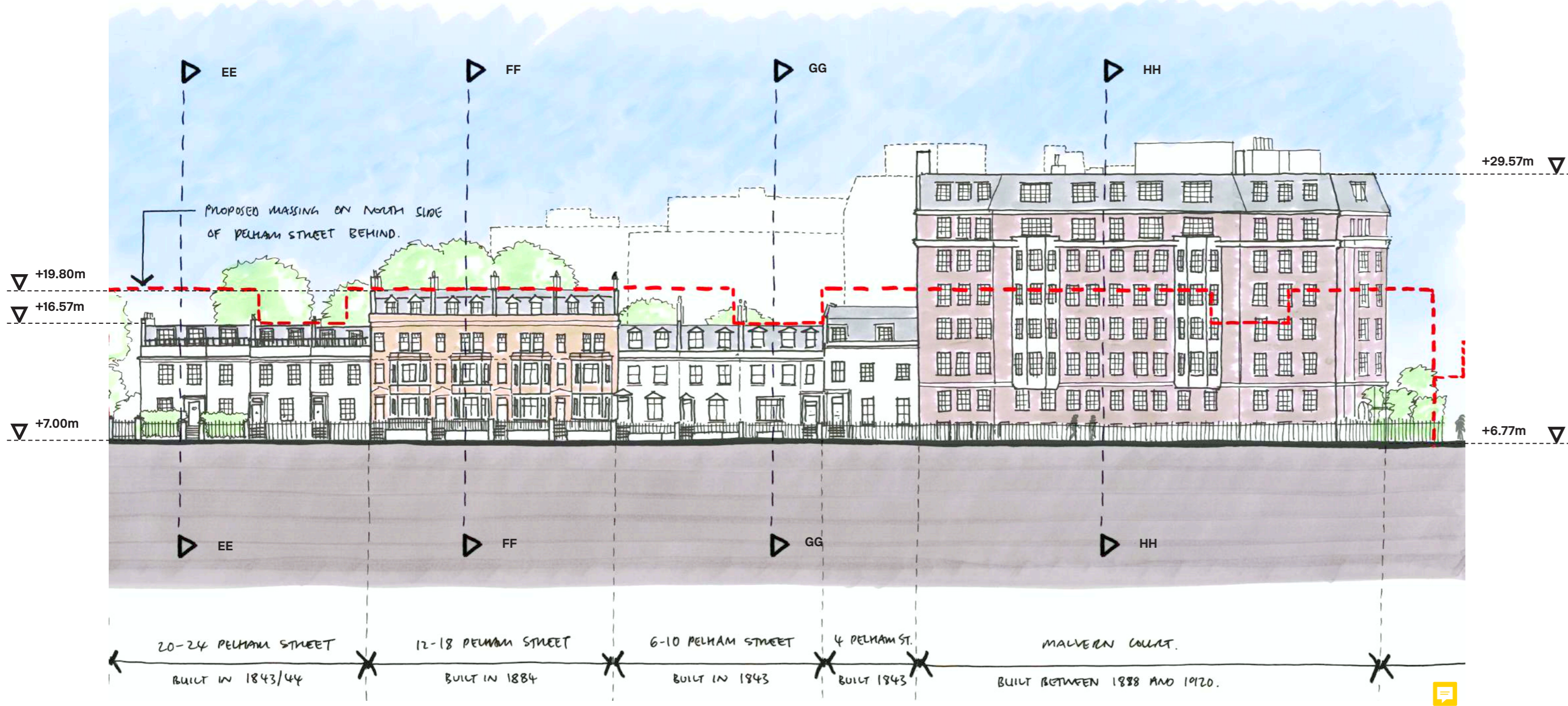
View from Cromwell Place



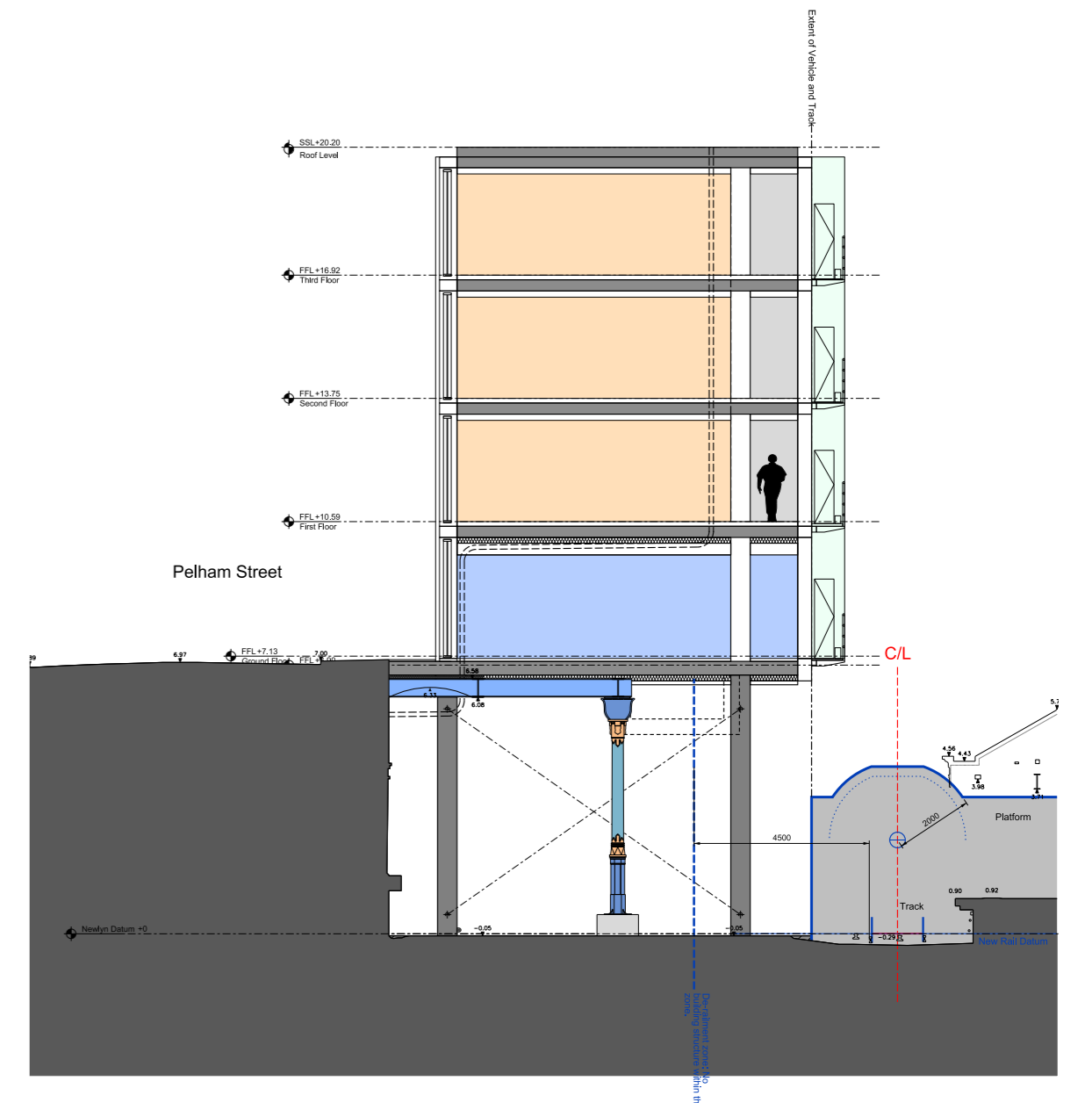
South Kensington Station Circa 1915, indicating new arrangement of 20-34 Thurloe St

The Pelham Street shopfronts - constructed in 1915, photographed in 1970 and demolished 1970-72

Rear view of the Pelham Street shops from station platform



Pelham Street South Elevation

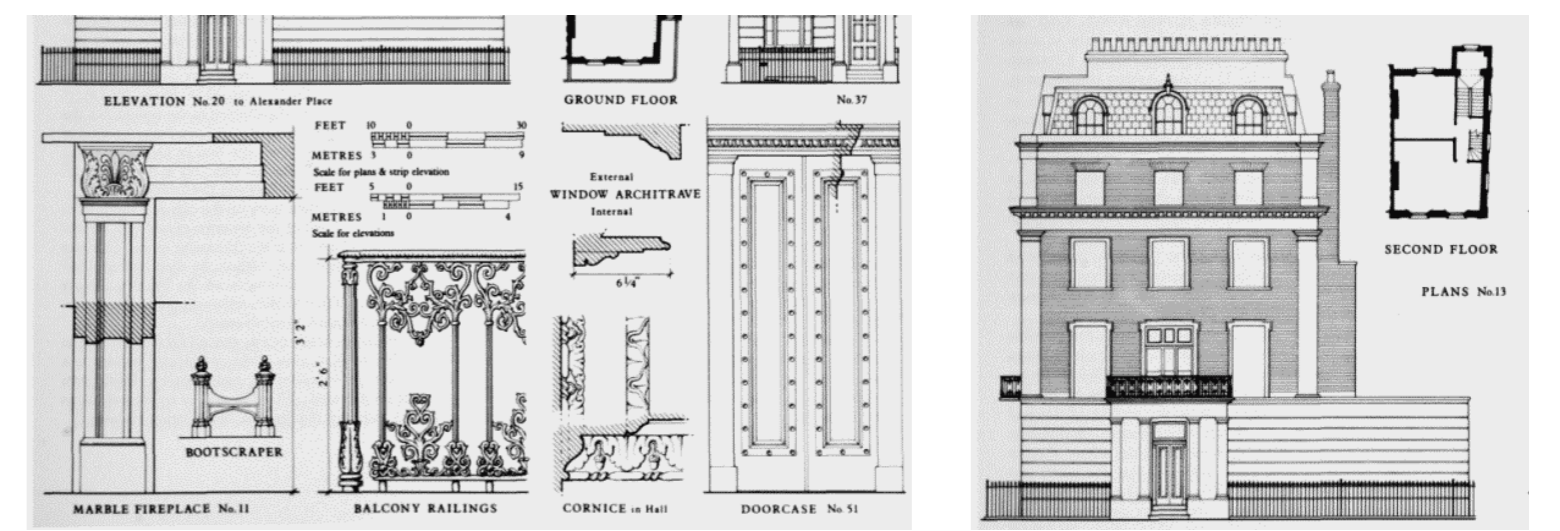
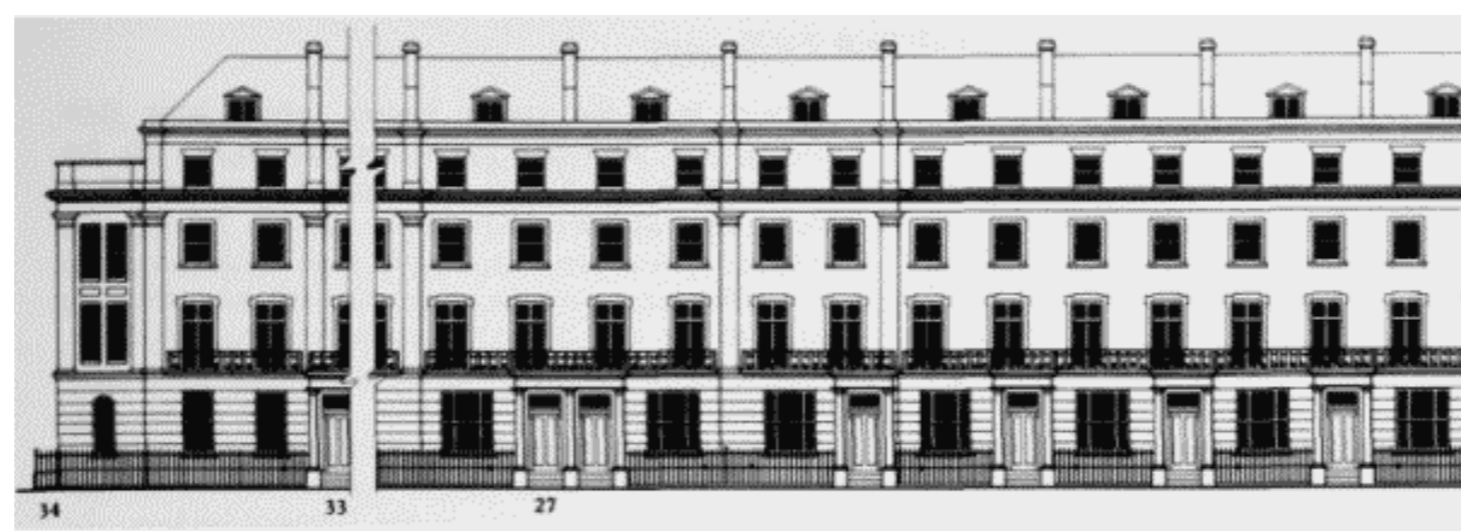
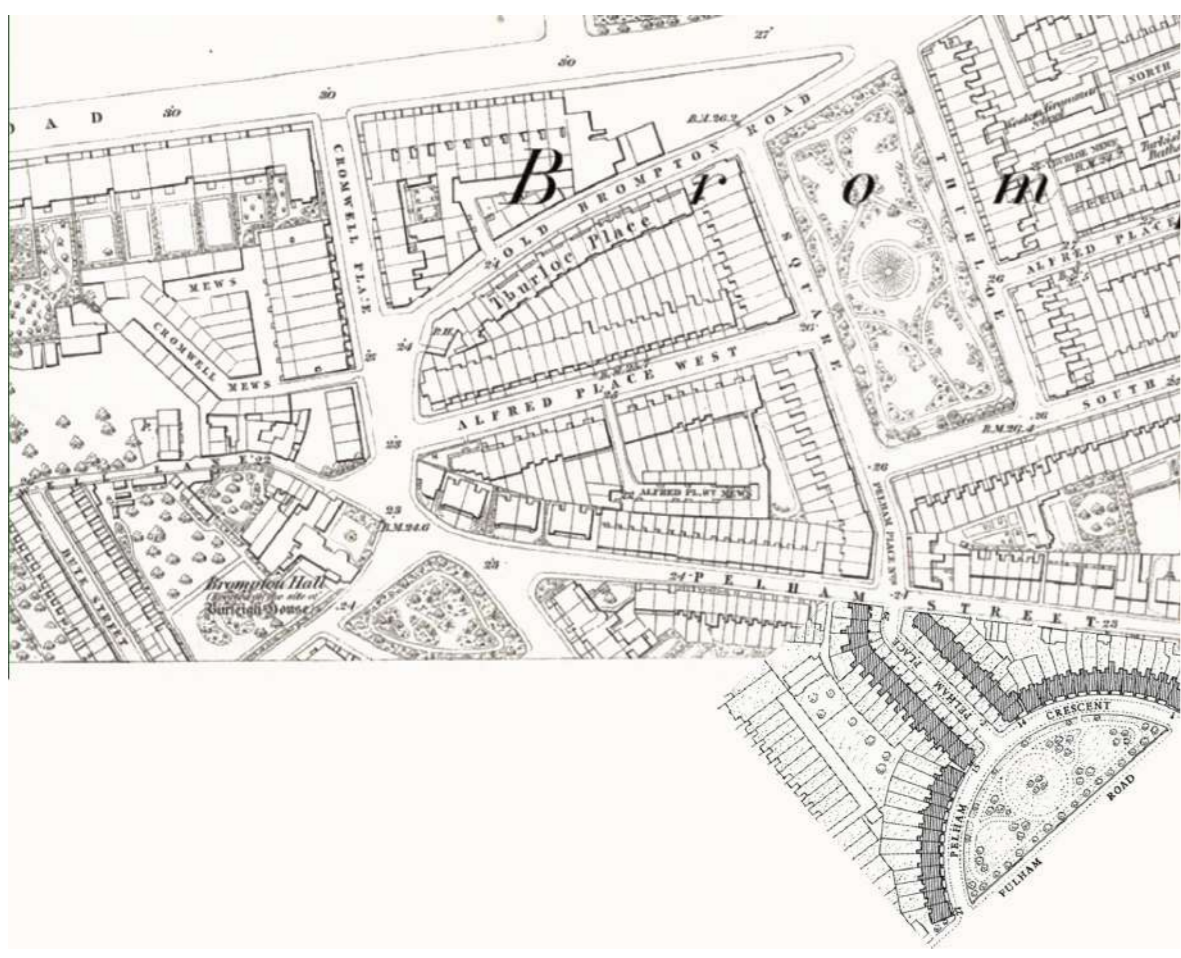


Cross section through Pelham Street



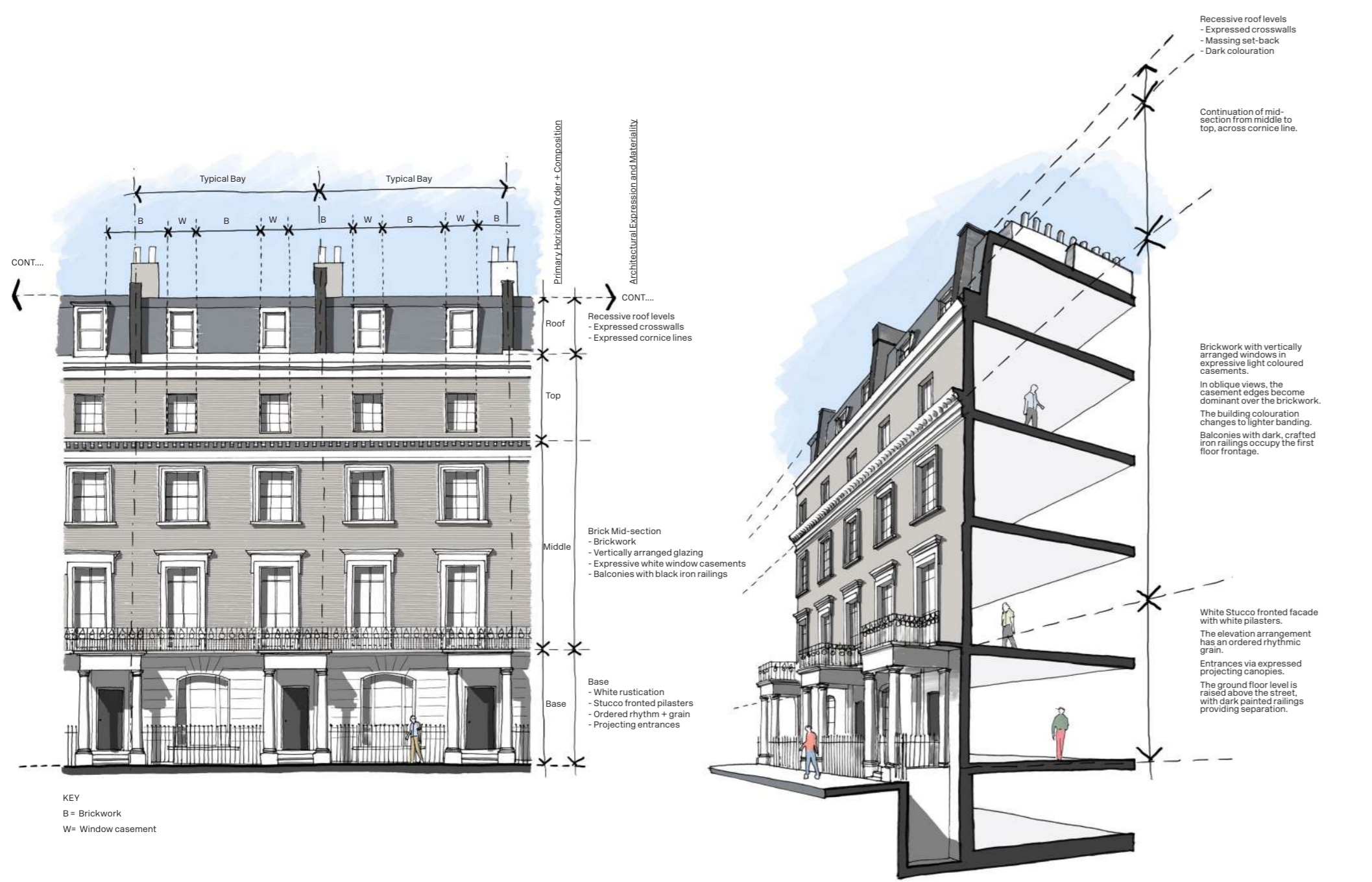
View west along Pelham Street at the junction of Pelham Place and Thurloe Square

South Kensington ASD: 6 - Pelham Street



Thurloe Square elevations, plans and details 1840-1846

Thurloe Square, constructed 1842-45 and Pelham Place, constructed 1835-40



View north along Thurloe Square

South Kensington ASD: 7 - Thurloe Square



North Aerial View



South Aerial View

South Kensington ASD: 8 - Scheme Overview